

In this issue >>>

Technology moves to find more effective and cost efficient ways to grow healthy turf.



Issue
ONE

Insight into the Current Turf Management Practices

For Every Blade of Grass



Current topics >>>

Sea Kelp Boosts Stress resistance in plants

Harvested from the Pacific Ocean off the coast of British Columbia, **Kelp Grow** extract contains the straight liquid ingredients from inside the kelp plant cell. Patented cold-press process squeezes out the beneficial compounds that are sprayed on turf to result in root stimulation, better stress resistance, and healthier turf. .

KELP GROW – 1 quart per acre, every 2 weeks. Tank mixes with other fertilizer and pesticides. Add it to your current spray program.

When Turf Simply Cannot “See the Light”

Growing Warm Season Turf during this Rainy-Overcast Season

Plants growing in low light have elongated cells with thin walls and are subject to damage from traffic and disease.

Raising cutting heights is often the first step in helping plants survive periods of low light, but raising cutting heights has its limits. Another common suggestion is to limit fertilizer applications, especially nitrogen. However, it is important to maintain a complete nutrient regime that

includes less total N, but does not reduce the levels of the other 12 elements. Photosynthesis requires all 7 micronutrients, every day, all the time, in order to capture light. Weekly, or bi-weekly applications of Planet Turf **Vitalus** at 0.25 oz. /1000 will supply micros, vitamin B1, B6, and seaweed extract in readily absorbed foliar form.

Weak, thin, cell walls are the problem and that results in shallow roots and thin turf. Research shows that there may be some helpful tips.

Good planning is the key to healthy plants and root systems.

Dr. Peter Dernoeden showed that applications of phosphite can improve photosynthesis. This is a benefit under shade or low light conditions. Phosphite can be applied using Nutrigrow Magnum, Nutrigrow Calciphite, (calcium phosphite) or Fosetyl-Al fungicide.

Contact us for labels and rates.

Plant growth regulators, **PGR 113** and **Anuew**, can create compact cells, reduce mowing and water use, and generally improve shade performance of zoysia, paspalum, and bermudagrass. All of these can be added to the foliar program at the end of this newsletter.



Pests >>>

Diseases of Warm Season Turf

A promising new product derived from cold-pressed orange oil extract is performing well for the control of fairy ring, localized dry spots, and as a contact insecticide/fungicide.

Applied at 1-3 oz per 1000 sq. ft., **ORO-RZ** will dehydrate mycelium, eliminate hydrophobic soils and kill insects on contact. It is safe, mixes with fertilizer and other

pesticides, and is a natural product.



ROTATOR (fluazinam) broad spectrum fungicide is excellent on dollar spot and patch diseases. To improve the longevity of fungicides, we recommend mixing with **SYNC**, a fungicide activator. Sync allows for lower rates of water and extends the life of all fungicides – important when the weather causes scheduled application delays. Only 1 pint per 100 gal of spray solution. \$21 per pint.



Weeds

Lacking a large number of weed-pickers, most managers are forced to use herbicides to manage weeds. A combination of pre and post emergent products should be part of your strategy. **KATANA** herbicide, by PBI Gordon controls sedge, kyllinga, crabgrass, at 1.5 oz. per acre. **Sulf 396, Quinpro, MSMA, and Metricor** are other herbicides that have a place for weed control on warm season grasses.

Nutrition >>>

Is Nano Here? If it is...I can't see it!

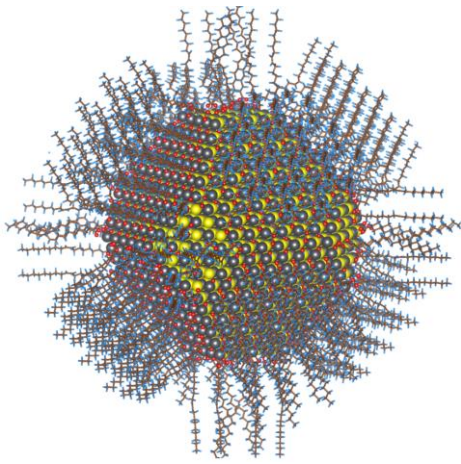
The silicon particle in the picture is 100 nanometers in size – a germ is 1000 nanometers! These particles can hold a tremendous number of nutrient ions, creating a powerful nutrient delivery system that feeds plants at efficiencies 10-40 times better than traditional formulations.

Our goal is to reduce nutrient inputs to the environment, reduce rates and container disposal, and improve nutrient delivery and plant use efficiency. 11 years ago Planet Turf introduced Polyamine technology; micronutrients chelated using amino acids. Small, and effective, Polyamine Iron greens up turf at only 0.5-1 oz. /1000 sq. ft. Adding **NANO** technology to our foliar program will result in healthier turf because of more effective, longer lasting, and maximum movement of nutrients inside the plant.

SUGGESTED FOLIAR PROGRAM PER ACRE/2-3 WEEK INTERVAL

1.5 GAL KICK 10-2-4
10 oz. Vitalus
0.5 OZ IRON POLYAMINE
4 OZ NANO RISE

- Add Magnum or Calciphite additional benefits during low light and high disease
- Add Kelp Grow during stress periods



Nano silicon with over 1000 sites to hold nutrients

It's in the Tank

A 4 oz. per acre rate of Planet Turf NANO additive will increase efficiency, improve uptake, and deliver your nutrient tank mix to all areas of the plant – every cell. From new growth to the root hair tip. Trials at the University of Florida, Tennessee, and Iowa have proven the benefits of nano fertilizer. The future is NANO, and we are excited to be the first company to offer this technology to you.